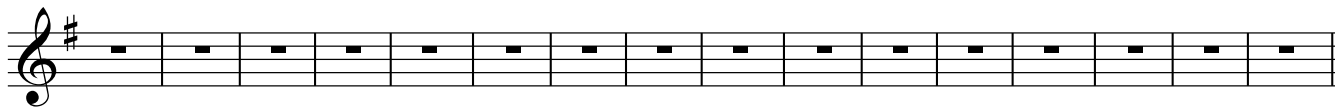
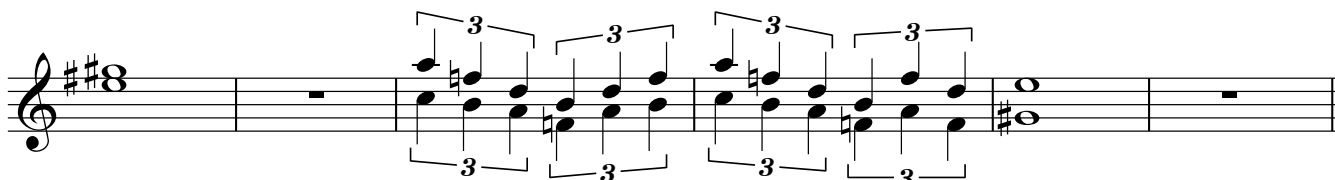
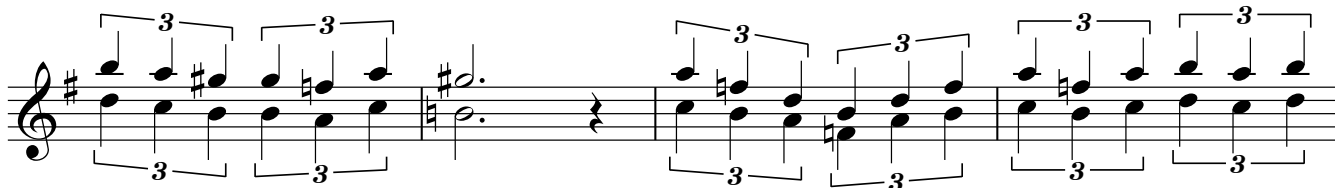
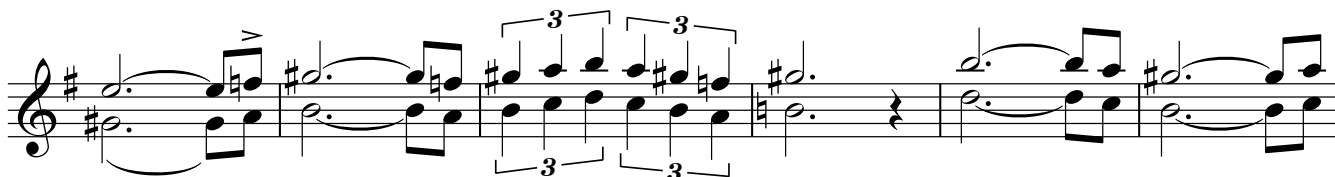
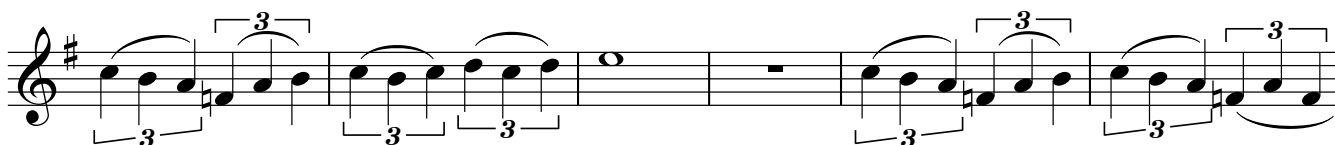
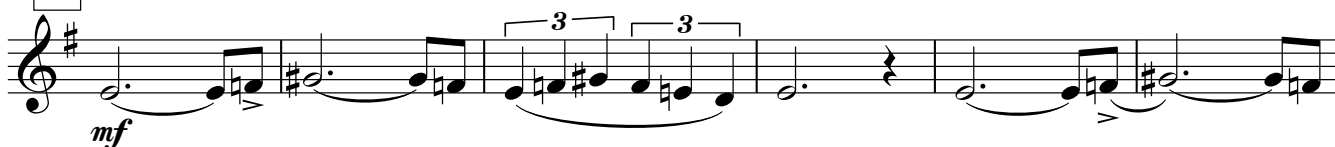


instant PLAY

♩=120



1 PLAY AT ANY REGISTER



First musical staff featuring chords with accents and dynamics. The notes are G4, A4, B4, C5, D5, E5, F5, G5. Dynamics include *sfp* with an accent (^) and a hairpin (<). A double bar line is present after the third measure.

Second musical staff continuing the chordal texture. Dynamics include *sfp* with an accent (^) and a hairpin (<).

Third musical staff, labeled with a box containing the number 2. It contains a first ending bracket labeled 1. The staff is mostly empty, indicating an improvised solo.

Fourth musical staff, labeled with a box containing the number 3. It contains a second ending bracket labeled 2. The staff is mostly empty, indicating an improvised solo.

Fifth musical staff featuring a *legato* marking and triplet markings (3). The notes are G4, A4, B4, C5, D5, E5, F5, G5.

Sixth musical staff featuring triplet markings (3). The notes are G4, A4, B4, C5, D5, E5, F5, G5.

Seventh musical staff featuring triplet markings (3). The notes are G4, A4, B4, C5, D5, E5, F5, G5.

Eighth musical staff featuring triplet markings (3). The notes are G4, A4, B4, C5, D5, E5, F5, G5.

Ninth musical staff featuring triplet markings (3). The notes are G4, A4, B4, C5, D5, E5, F5, G5.

sfp < *sfp* < *sfp* <

sfp < *sfp* <