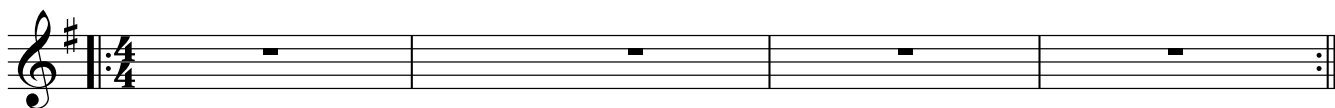


flexible PLAY

♩=120

THUMB



HEAD

PLAY AT ANY REGISTER



FIST



HEAD 2

(alternative or 2nd melody)

A musical score for a single melodic line in treble clef, key of E major (two sharps). The score consists of five staves of music. The first staff begins with a double bar line and a repeat sign. The music features a variety of rhythmic patterns, including eighth and sixteenth notes, and rests. There are several dynamic markings, including accents (>) and a forte (f) marking. The piece concludes with a double bar line and repeat sign.

notes:

notes for solos

A single staff of music in treble clef, key of E major. It contains a sequence of seven notes: E4, F#4, G4, A4, B4, C5, and D5. The notes are written as quarter notes.

An empty musical staff in treble clef, key of E major.

An empty musical staff in treble clef, key of E major.

An empty musical staff in treble clef, key of E major.