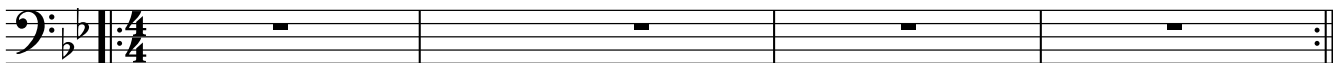


flexible **PLAY**

♩=120

THUMB



HEAD

PLAY AT ANY REGISTER

A musical staff in bass clef with a 4/4 time signature. The first two measures feature a whole note chord with a 'legato' marking and a slur. The following four measures contain eighth-note triplets, each with a '3' above and below the notes. The staff concludes with a whole rest.

FIST

A musical staff in bass clef with a 4/4 time signature. The first two measures feature a whole note chord with an accent (^) above it. The next two measures contain eighth-note patterns with accents (^) above the notes. The staff concludes with a whole rest.

HEAD 2

(alternative or 2nd melody)

Musical notation for 'HEAD 2' in bass clef with a key signature of two flats. The piece consists of four staves of music. The first staff begins with a repeat sign and contains a melodic line with slurs and ties. The second staff continues the melody with slurs. The third staff features a more rhythmic pattern with slurs. The fourth staff concludes the piece with a final cadence and repeat sign.

notes:

notes for solos

Musical notation for 'notes for solos' in bass clef with a key signature of two flats. It shows a single staff with a sequence of seven notes: G2, F2, E2, D2, C2, B1, and A1.

An empty musical staff in bass clef with a key signature of two flats.

An empty musical staff in bass clef with a key signature of two flats.

An empty musical staff in bass clef with a key signature of two flats.