

flexible PLAY

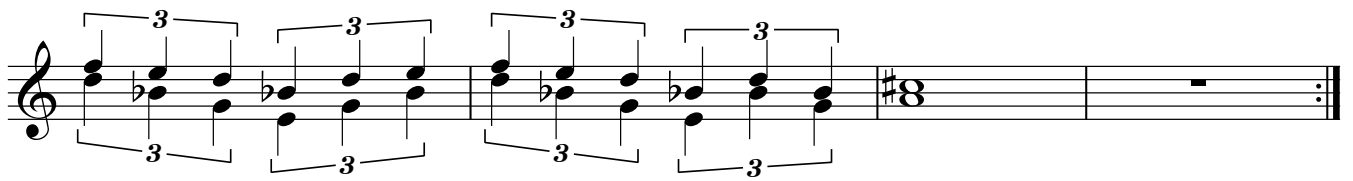
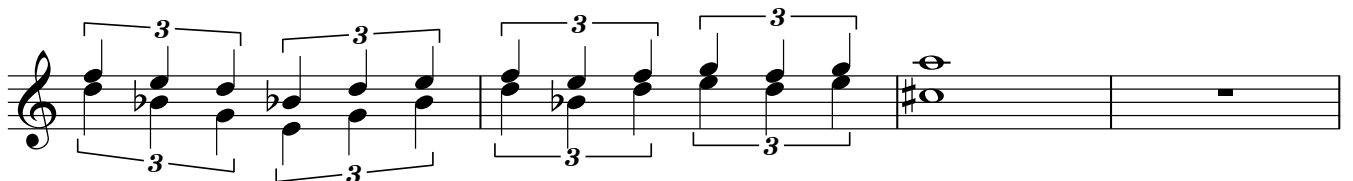
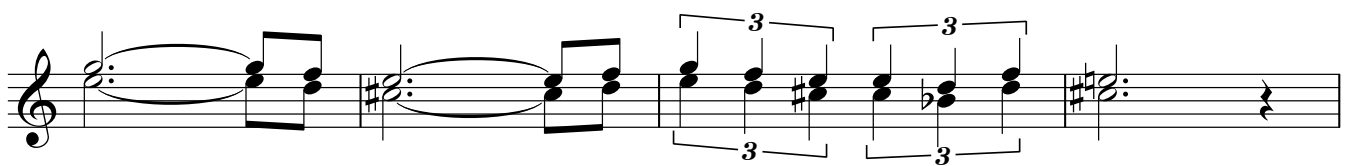
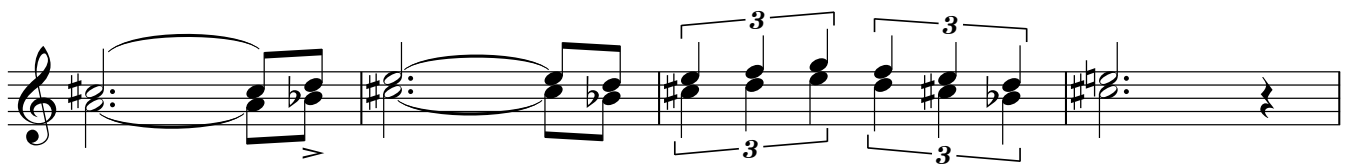
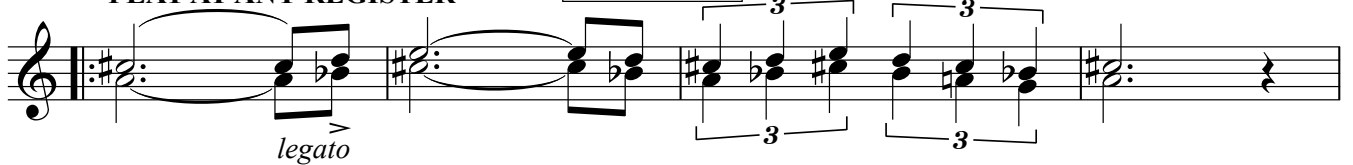
$\text{♩} = 120$

THUMB



HEAD

PLAY AT ANY REGISTER



FIST



HEAD 2

(alternative or 2nd melody)

Musical notation for 'HEAD 2' consisting of four staves. The first staff begins with a treble clef, a key signature of one flat (Bb), and a common time signature. It features a melodic line with eighth and quarter notes, including a repeat sign at the beginning. The second staff continues the melody with eighth notes and quarter notes, some with slurs. The third staff uses a bass clef and continues the melodic line with eighth and quarter notes. The fourth staff concludes the piece with a final cadence, including a double bar line and repeat dots.

notes:

notes for solos

A single staff of music in treble clef showing a sequence of seven notes: Bb, B, C, D, E, F, G. Each note is a quarter note.

An empty musical staff in treble clef.

An empty musical staff in treble clef.

An empty musical staff in treble clef.